

# D550.SHX Curve LED downlight Datasheet

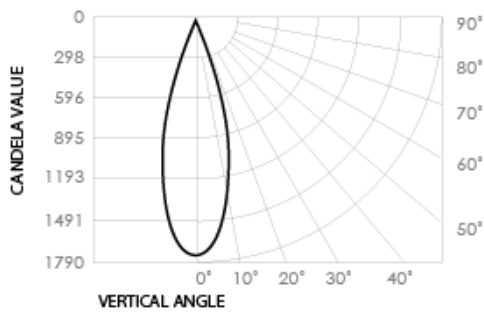


## Product codes

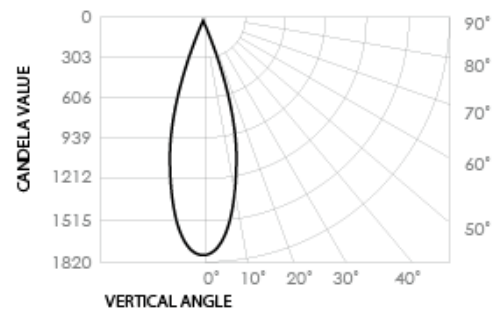
<b>Unit:</b> D550.SHX	<b>Series:</b> CR	<b>Colour temp.:</b> 2.7K (Special Order) 3K 4K	<b>Beam angle (°):</b> 36	<b>Colour:</b> B (Black) W (White)
--------------------------	----------------------	--	------------------------------	--

## Photometrics

### Standard Products



Source lumen output: 670lm  
Delivered lumen: 550lm  
Efficacy: 65lm/W  
Colour temp.: 3000K  
Beam angle: 36°

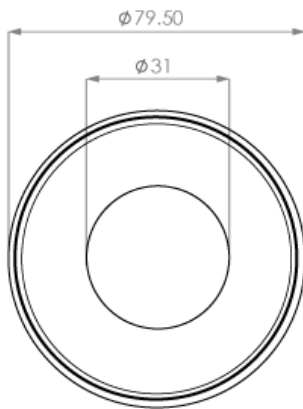


Source lumen output: 685lm  
Delivered lumen: 560lm  
Efficacy: 66lm/W  
Colour temp.: 4000K  
Beam angle: 36°

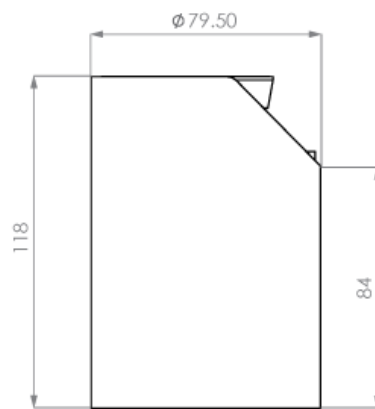
## Dimensions (mm)

---

Front view



Side view



## Electrical

<b>Input voltage:</b> 220-240V	<b>Power usage:</b> 8.5W	<b>Driver power factor:</b> 0.9	<b>IP rating:</b> IP44	<b>Surge protection:</b> 3100V
<b>AC Cable length:</b> N/Am	<b>Dimmable:</b> Yes	<b>Driver:</b> BG-010ASD-200mA		

## Operational

<b>Operating temp.:</b> -30 to 70°C	<b>Average temp.:</b> 64°C	<b>Ambient temp.:</b> -28 to 65°C	<b>Lifetime L70, B10:</b> 70,000 hrs (@TA25)	<b>Source Lumens:</b> 670lm or 685lm or 630lm
--	-------------------------------	--------------------------------------	---	--

## Physical

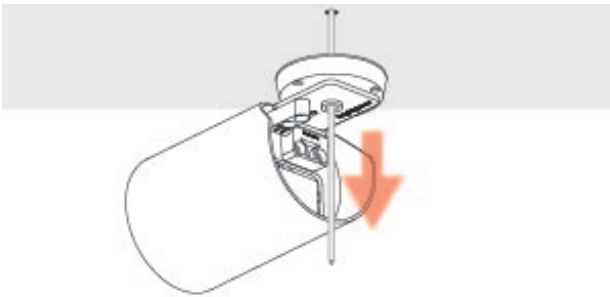
<b>Weight:</b> 380g	<b>Gimbal angle:</b> 90°/360°	<b>Warranty:</b> 7 years
------------------------	----------------------------------	-----------------------------

## Compatibility

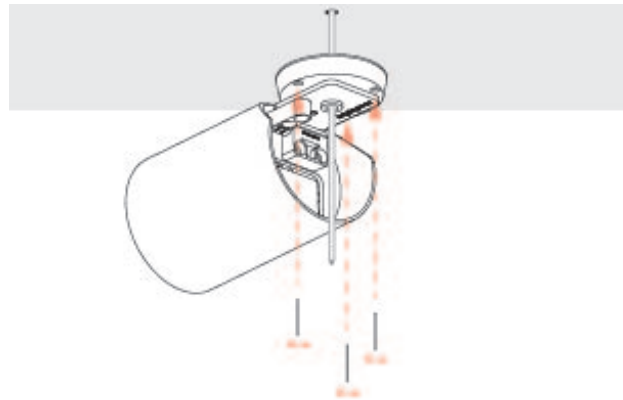
**Recommended Dimmers:**  
"Compatible with leading home automation systems and dimmers.  
Recommended Dimmers:  
Universal, Trailing Edge, Leading Edge.

\*For more details please refer to:  
<https://brightgreen.com/digital-driver>  
All systems are unique, please  
call 1300 672 499 for advice on your installation."

## Installation

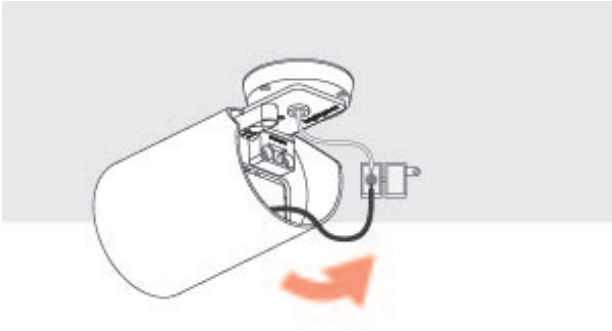


**Step 1**  
Thread the power cable through the base plate and align the base plate to the roof.



**Step 2**  
Fasten the base plate to the roof using the provided screws.

## Installation

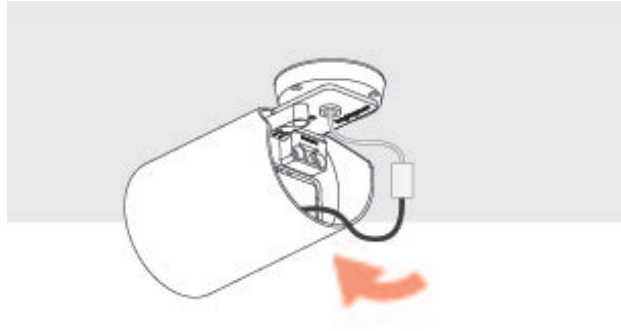


### Step 3

Remove the junction box from the back cavity of the D550.SHX.

Open the junction box and connect the power cable to the junction box.

Re-attach cover of junction box inline with Australian standards



### Step 4

Slot the junction box back into the D550.SHX cavity.